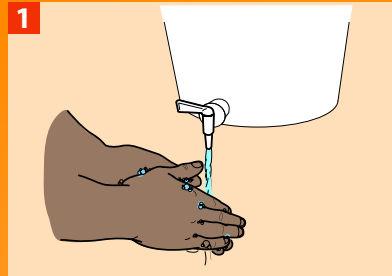
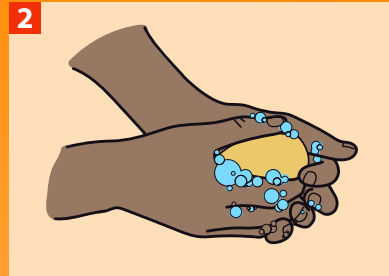


Erinaba okobyala

Unabe ok'obyala n'esabuni okondambi y'esyosekundi 20-30 wab'ilusya esyonjimba esh'eriyiketseriyamo. Ebyala by'amabya ibichinire kutsibu, iwanab'ok'obyala n'esabuni okondambi y'esyosekundi 40-60. Wangana naba ne "désinfectant" hamabya isihali esabuni.



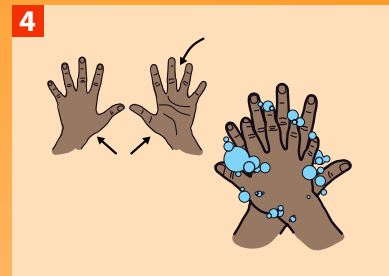
1 Utsapaye ebyala n'amaghetse.



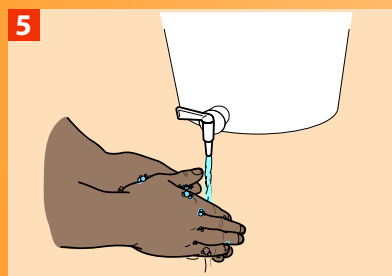
2 Uhakabe esabuni ahosi okobyala.



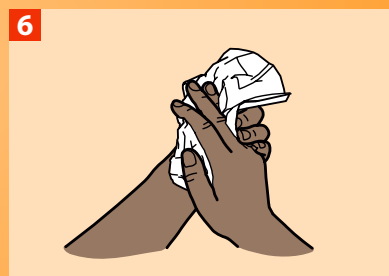
3 Utsigitse ahosi oko byala.



4 Unabe embere n'enyuma ye byala byagu, n'omokati k'eminwe.



5 Unabe n'amagetse.



6 Usangule ebyala n'ekisanguliryo ekyangaguswa kutse umaye ebyala by'oko mashini aweryuma ebyala.

Emigulu y'erinaba oko byala

- Embere sy'erihuka, iunemuhuka neryo kandi wabibug'erihuka
- Embere sy'eribasya
- Embere n'enuma ry'erihuka omukoni
- Embere n'enyuma ry'erihondera ekironda
- Wabilwa ebwiga
- Wabilusy'omwana kw'ebilalio n'erimunabya
- Wabimira, wabikohola kutse wabitw'esyotsihya